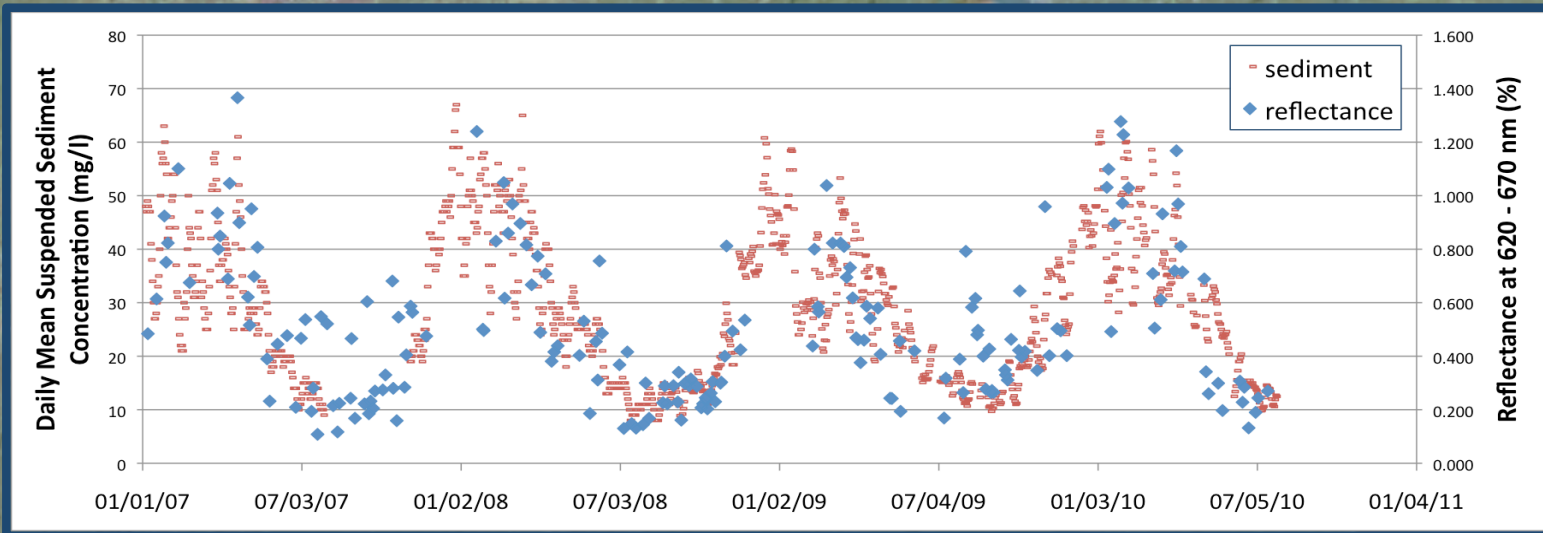
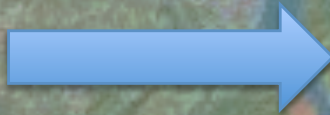
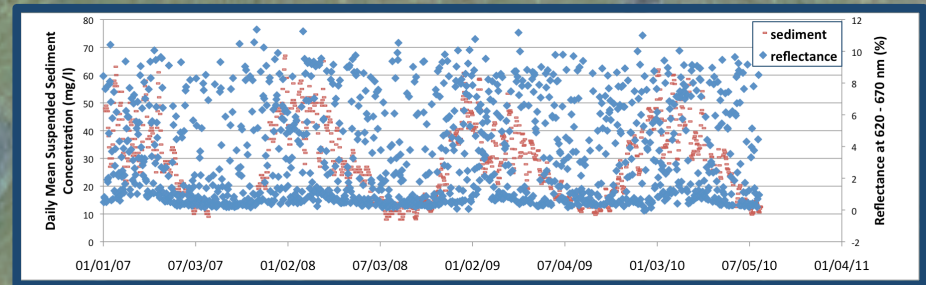


Remote Sensing of Suspended Sediment Load in the Hudson River

Initial satellite data has a great deal of noise due to atmospheric interference from clouds and aerosols, oblique sun and view angles, etc...



After applying numerical filters to satellite data, a more coherent time series emerges...



Susan Phan, Columbia College
Dr. Ajit Subramaniam, LDEO

